



World Food  
Programme

# School Feeding Programme During COVID-19

Bangladesh

SAVING  
LIVES  
CHANGING  
LIVES

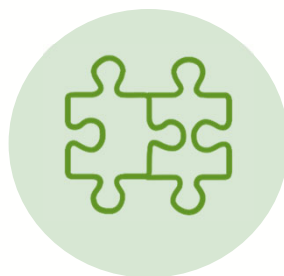
10 Nov 2020



# School Feeding Programme: General Information

**2001**

WFP launched emergency School Feeding after devastating floods in Northern Bangladesh

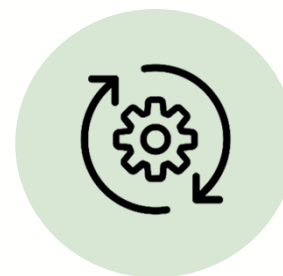


**2010**

The Government of Bangladesh launched the "School Feeding Programme in Poverty Prone Areas" project with technical support from WFP

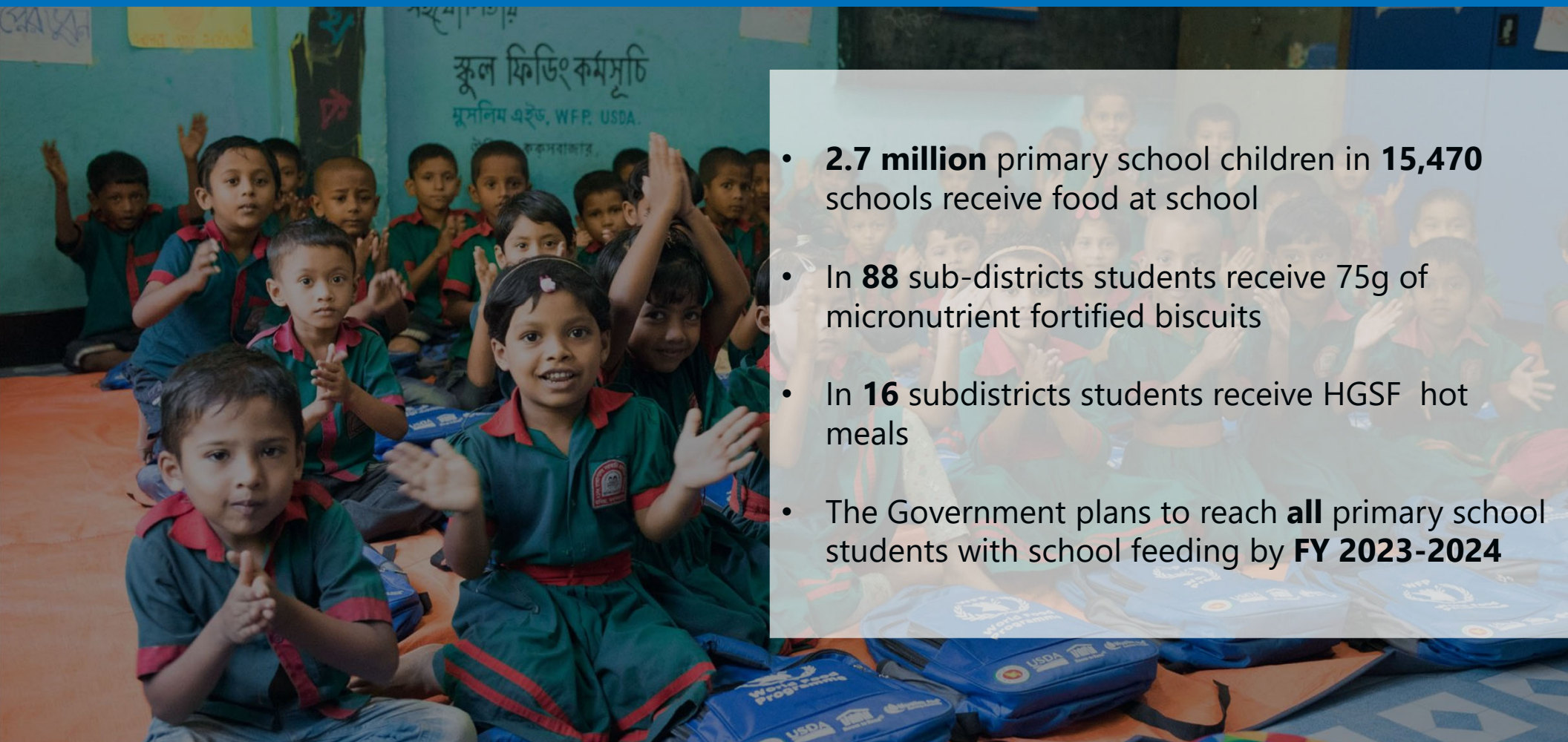
**2020**

The School Feeding Programme is implemented in 104 sub-districts, 94 of which are funded by the Government of Bangladesh



World Food Programme

# School Feeding Programme in Bangladesh: **Host Community**



- **2.7 million** primary school children in **15,470** schools receive food at school
- In **88** sub-districts students receive 75g of micronutrient fortified biscuits
- In **16** subdistricts students receive HGSF hot meals
- The Government plans to reach **all** primary school students with school feeding by **FY 2023-2024**



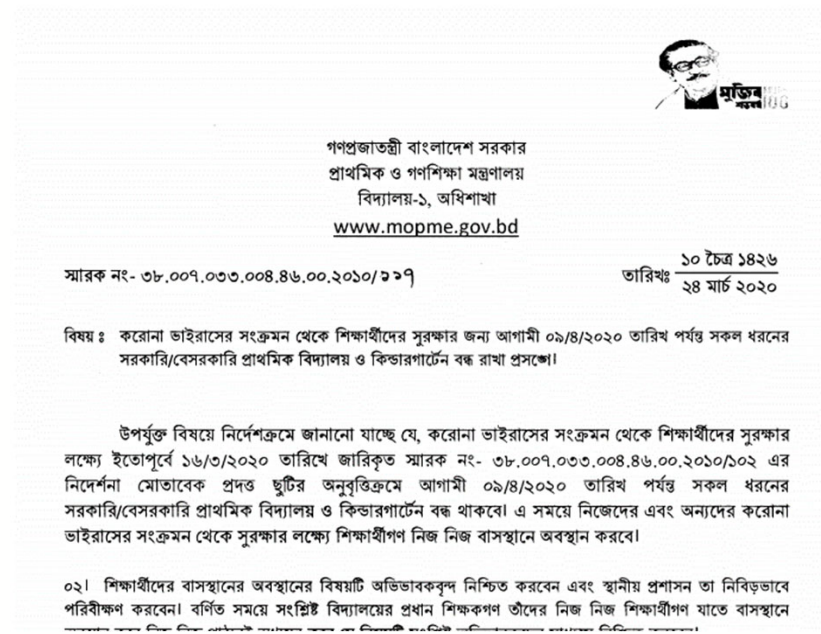
A young Rohingya girl with white face paint, smiling and eating a biscuit. The background is a blurred classroom setting with other children and educational posters.

## School Feeding Programme: **Rohingya Refugee Camps**

- More than **276,000** Rohingya children aged 3-14 years receive one packet (50gm) of fortified biscuits each school day
- More than **4,200** learning centres across **34** camps in Ukhiya and Teknaf are covered
- 500+ refugee volunteers deliver biscuits each day to every learning centre from 25 camp stores

# School Feeding Programme: Impact of COVID-19

- The **Ministry of Primary and Mass Education (MoPME)** declared **closure of all educational institutions** until further notice, on 16<sup>th</sup> March 2020.
- Following the notice, the Office of the Refugee Relief and Repatriation Commissioner also published a notice declaring closure of all learning centres in the camps.
- Considering the circumstances of the COVID-19 outbreak, a formal decision to conduct school feeding through an alternate distribution arrangement was taken in April 2020, in agreement with the Government.



# School Feeding Programme during COVID-19 Pandemic in **Rohingya Camps**



World Food Programme

## School Feeding Programme during COVID-19 Pandemic: **Rohingya Refugee Camps**



- In July 2020, biscuit distribution in the camps began in *General Food Assistance (GFA)* outlets;
- All households across 34 camps receive 25 packets of micronutrient fortified biscuits each month through this distribution.



# School Feeding Programme during COVID-19 Pandemic: **Rohingya Refugee Camps**

- SF developed coordination mechanisms with the GFA team to carrying out biscuit distribution in the camps effectively;
- SF coordinates with the SCOPE unit by sharing information about target beneficiaries in order to create vouchers for Rohingya individuals who can then get a printed ticket (through mPos machine) allocating them biscuit with their monthly purchase of food items.





## School Feeding Programme during COVID-19 Pandemic: **Rohingya Refugee Camps**



Rohingya volunteers transfer biscuits to warehouses.



Individual biscuit packets are repacked by the volunteers into bags of 25 packets for distribution at the warehouse/outlets.



World Food Programme

## School Feeding Programme during COVID-19 Pandemic: **Rohingya Refugee Camps**



All individuals who come to purchase or receive food from the outlets, are checked and verified through **e-voucher, building block** platforms.



World Food Programme



## School Feeding Programme during COVID-19 Pandemic: **Rohingya Refugee Camps**



Once successfully verified, individuals can collect their required food items and then go to receive biscuits from the field team on the way out.



World Food Programme



## School Feeding Programme during COVID-19 Pandemic: **Rohingya Refugee Camps**



During distribution, local partners disseminate COVID-19 prevention messages to people sitting in the waiting area before entering the food outlets through megaphone



Rohingya volunteers also provide information on how to maintain hygiene practices during distribution



World Food Programme

# School Feeding Programme during COVID-19 Pandemic in the **Host Community**



World Food Programme

# School Feeding Programme during COVID-19 Pandemic: **Host Community**

- WFP developed technical guidance to enable local partners to deliver biscuits to students' homes
- 2.7 million students (Government and WFP) now receive 50 packets of micronutrient biscuits covering two months at their doorstep.
- Partner staff were provided online orientation for door-to-door distribution.
- Partner staff are following health and safety measures during distribution as well as disseminating messages about COVID-19 prevention measures to students and guardians.



World Food Programme



# School Feeding Programme during COVID-19 Pandemic: **Host Community**



With support of cooperating partners, WFP is delivering biscuits at doorsteps of students who live in hard to reach/remote areas.



# School Feeding Programme during COVID-19 Pandemic: **Host Community**



Partner field staffs on the way to distributing biscuits to students living in hilly areas



A field facilitator is distributing biscuits, dates and masks to a student living on St. Martin Island under Teknaf Upazila and disseminating messages about COVID-19 preventive measures



# School Feeding Programme during COVID-19 Pandemic: **Host Community**



A partner field staff in Ukhiya placing a sticker with messages about COVID-19 safety measures for students and guardians during biscuit distribution.



World Food Programme



A partner field staff in Pekua disseminating messages about how to safely consume the biscuits as well as health and safety measures to prevent COVID-19.



## School Feeding Programme during COVID-19 Pandemic: **Host Community**

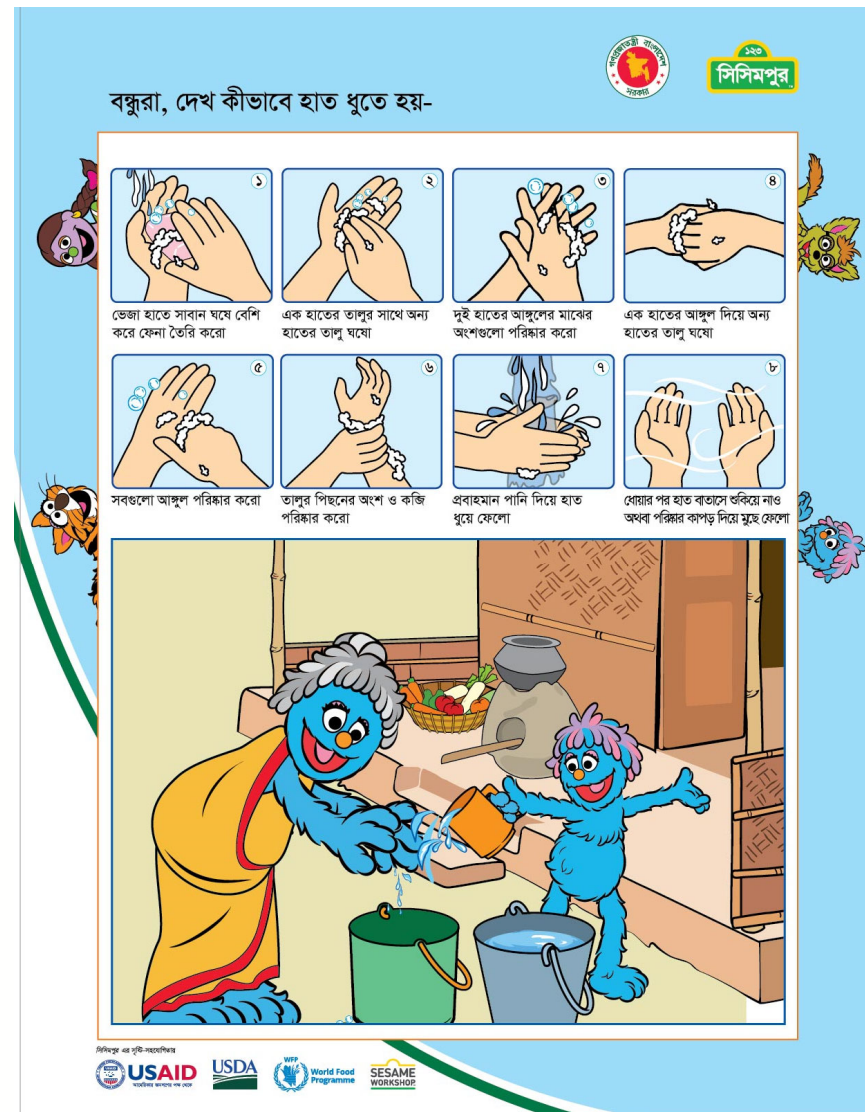


- In addition to biscuits, students in WFP-implemented areas received dates donated by Saudi Arabia.
- WFP School Feeding team secured and distributed reusable cloth masks to children three sub-districts.
- Under USDA's McGovern-Dole-funded School Feeding Programme, children in two sub-districts received literacy materials including story cards, stationery, worksheets, etc.

# School Feeding Programme during COVID-19

## Current Status

- Providing support and guidance to schools for safe reopening with local partners, including material drop off
- 3rd Round of biscuit distribution is ongoing in the host community.
- 5<sup>th</sup> round of biscuit distribution is ongoing in the camps.
- Post distribution remote monitoring is conducted in all areas
- Close liaison and coordination is maintained with RRRC and Government education officials at the central and local levels.



Materials developed for schools to support safe reopening

# SCHOOL FEEDING AS ADAPTIVE SOCIAL PROTECTION

	Host Community	Rohingya Camps
Before COVID-19	<ul style="list-style-type: none"> <li>• Biscuit or hot meal distribution at schools</li> <li>• Essential Learning Package</li> <li>• Deworming campaign</li> <li>• Capacity building and technical support for Government counterpart</li> </ul>	<ul style="list-style-type: none"> <li>• Biscuit distribution at learning centres</li> <li>• Health and hygiene sessions at Registered camps</li> <li>• Deworming campaign</li> </ul>
During COVID-19	<ul style="list-style-type: none"> <li>• Home delivery of biscuits</li> <li>• Distribution of COVID-19 messages and leaflets</li> <li>• Masks, dates and literacy materials were distributed in some WFP-areas</li> <li>• Capacity building and technical support for Government counterpart</li> </ul>	<ul style="list-style-type: none"> <li>• Distribution of biscuits at General Food Assistance outlets</li> <li>• Distribution of COVID-19 messages and leaflets</li> </ul>







# THANK YOU

[george.karmaker@wfp.org](mailto:george.karmaker@wfp.org)  
[katelyn.gless@wfp.org](mailto:katelyn.gless@wfp.org)