



# **NATIONAL SCHOOL FEEDING PROGRAMME (PNAE)**

**Karine Silva dos Santos**  
**PNAE General Coordinator**

# ***PNAE Coverage***

---

**Universal service**

**27 states**

**5.570 municipalities**

**Over 150,000 schools**

**Over 40 million students**

**Over 50 million daily meals**

**R\$ 4,15 billion in investments**



# ***PNAE Guidelines***

---



**Human Right to adequate food**



**Offering healthy and proper food**



**Food and Nutrition Education**



**Universal service**



**Civil Society Oversight**



**Support to sustainable development (smallholder farming, mandatory 30%)**

# *PNAE in pandemic times – legal support*



**Law no. 13,987/2020**



**Resolution no. 02/2020**



**Guideline Booklet – FNDE and MAPA\***



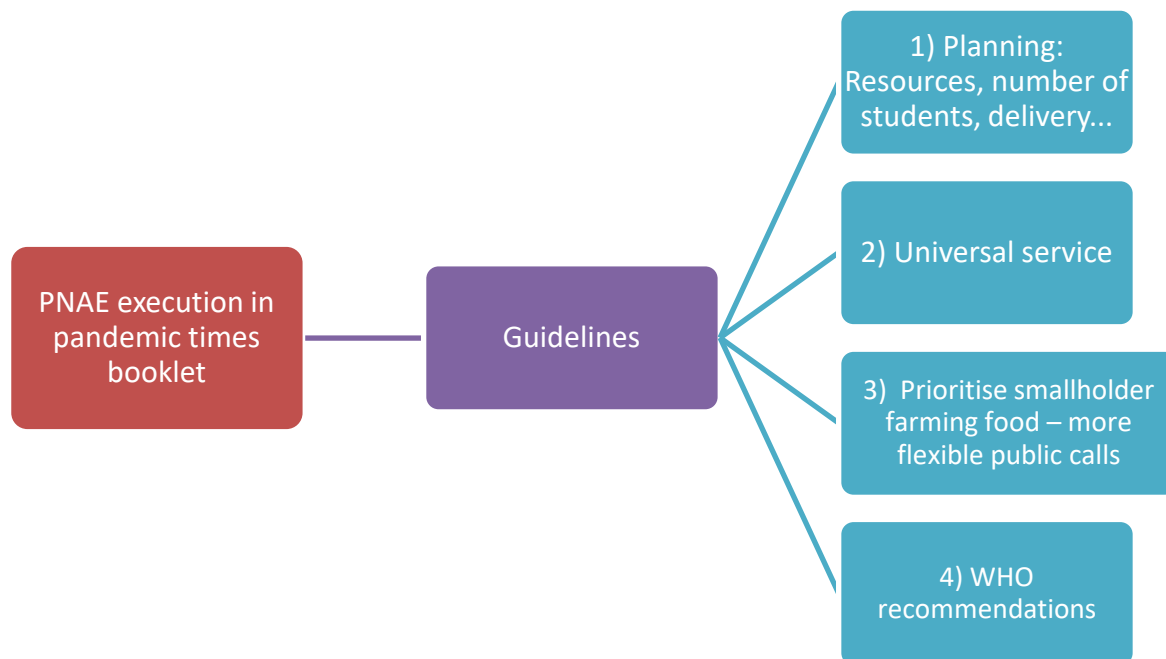
**Questions and Answer – FNDE Portal**



\*Ministry of Agriculture, Livestock, and Food Supply

# *PNAE during the COVID-19 pandemic*

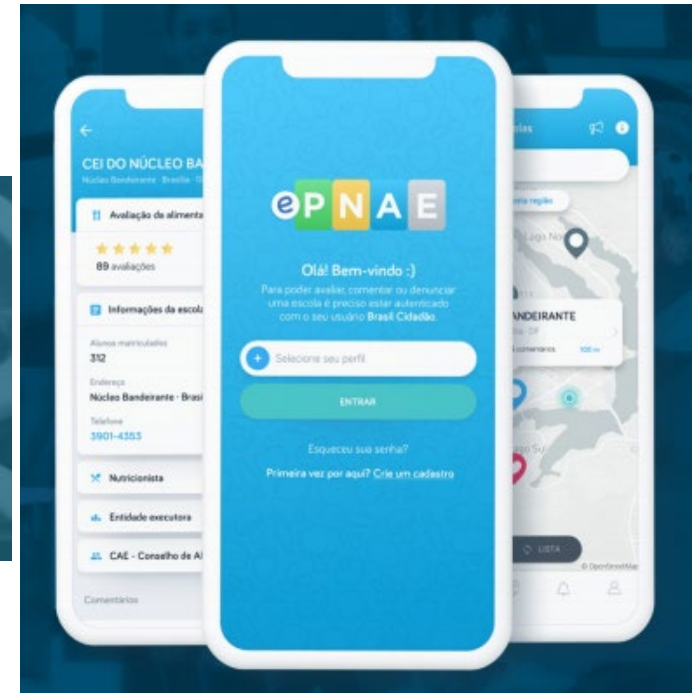
Law no. 11,947, the PNAE legal milestone, was changed by Law no. 13,987 to authorise, in exceptional character, the distribution of foodstuffs acquired with PNAE resources to parents or guardians of public basic education students during the period of suspended classes due to public emergency situation.



# e-PNAE – Civil Society Oversight App



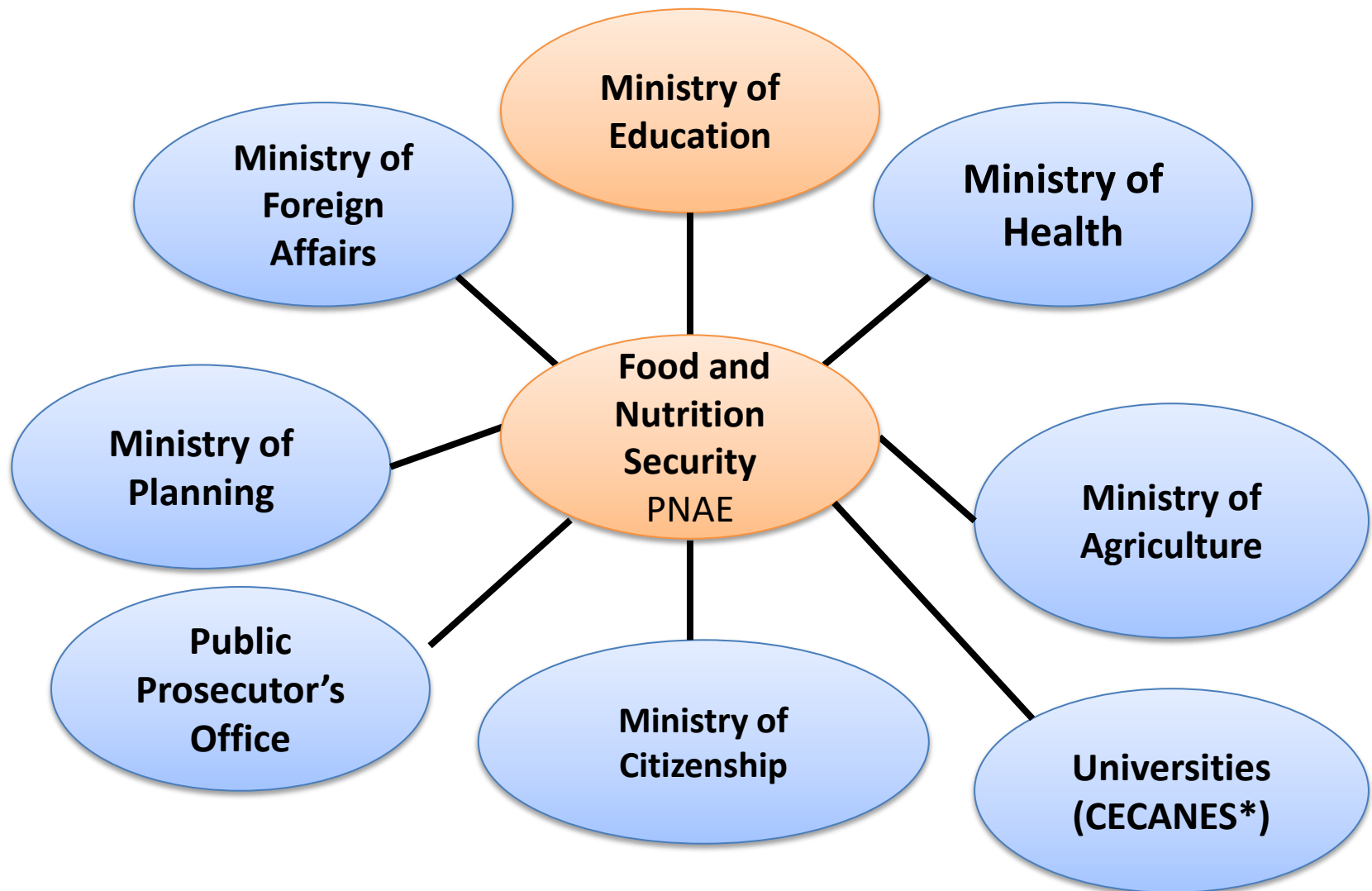
E-PNAE is a civil society oversight app for the National School Feeding Programme, in which parents, students, nutritionists, school feeding counselors and the entire community will be able to monitor and evaluate the meals offered at public schools all over the country.



<http://www.fn-de.gov.br/programas/pnae/controle-social-cae/e-pnae>

# ***PNAE - Intersectorality***

---











# Thank you!

Nacional Fund for the Development of Education – FNDE  
Educational Actions Board - DIRAE  
National School Feeding Programme General Coordination – CGPAE  
[cgpae@fnde.gov.br](mailto:cgpae@fnde.gov.br)